 Due to the possibility of concurrent circulation of influenza and COVID-19, providing influenza vaccinations to the public is a priority to protect the community and reduce the burden on the healthcare system.

Influenza immunization is critical to:

- protect individuals at high risk of influenza-related complications and hospitalizations, and co-infection of influenza and COVID-19
- decrease influenza outbreaks in congregate settings
- decrease hospitalizations and Emergency Room visits to preserve health care capacity for COVID-19 patients.

 Residents of Wellington County, Dufferin County and the City of Guelph who are over 6 months of age can access the flu vaccine at the following locations:

- 1) Local pharmacy (ages 5 and older)
- 2) Primary care provider, including during regular appointments
- 3) Public Health offices if a person cannot go to a local pharmacy or a primary care provider

Public Health Clinics

In Clinic, by Appointment Only

Dates may be subject to change

Wellington

Where:
Centre Wellington
Sportsplex, Fergus

When:
Oct 26th - Nov 7th

Dufferin

Where:
WDG Public Health
Office, Orangeville

When:
Oct 19th - Nov 7th

Guelph

Where:
WDG Public Health
Office, Guelph

When:
Oct 19th - Nov 7th

Monday - Thursday: 9am - 6:30pm

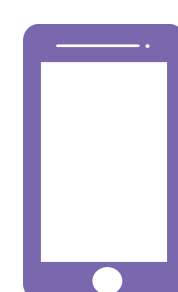
Friday - Saturday: 9am - 3:30pm

Wellington exceptions: Oct 19th 11am - 6:30pm, Nov 7th 9am - 3pm



User-friendly online booking system
and consent process

www.wdgpUBLICHEALTH.ca



Clients will be asked for consent for
WDGPH to share their influenza
immunization status with their primary
care provider



Shelters and Group Homes



WDGPH has offered to provide influenza vaccinations to all local congregate settings that do not have medical staff.

People at high risk of influenza related complications & hospitalizations

Defined by the National Advisory Committee on Immunization (NACI)



People over 65 or younger than 5



Pregnant woman



Essential community and health care workers



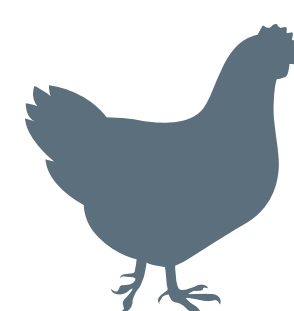
People with heart, brain, lung, kidney or immune disorders, diabetes, cancer, morbid obesity or anemia



Residents of nursing homes and other chronic care facilities



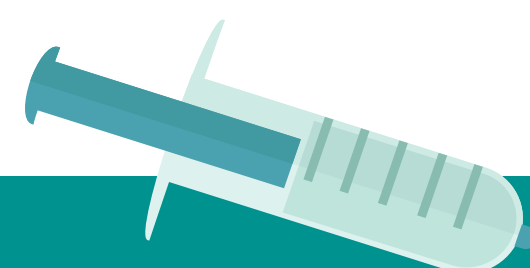
Indigenous people



People who work with poultry



People who could spread influenza to anyone who is high risk



Vaccine Information

Initial Distribution by WDGPH

Week of October 5th

Retirement homes, long term care homes & hospitals, followed by primary care providers.

Distribution to Pharmacies

October 5th-October 19th

By pharmaceutical distribution centres.

UIIP Launch

October 19th

Anticipated launch of the Universal Influenza Immunization Program.

Vaccine Ordering from WDGPH

Ongoing

Use WDGPH's Influenza Vaccine Order Form and order only a two-week supply by noon every Thursday for delivery or pick-up the following week.

*Providers in North Wellington should refer to their schedule.

Vaccine Types

Product	New Product Abbreviation	Licensed Ages for Use
Flulaval Tetra	IIV4-SD (Quadrivalent inactivated influenza vaccine-standard dose)	≥ 6 months of age
Fluzone Quadrivalent	IIV4-SD (Quadrivalent inactivated influenza vaccine-standard dose)	≥ 6 months of age
Flucelvax Quad	IIV4-SD (Quadrivalent inactivated influenza vaccine-standard dose)	≥ 9 years of age
Fluzone High Dose	IIV3-HD (Trivalent inactivated influenza vaccine-high dose)	65+ years

Approved pharmacies will be administering IIV3-HD to those 65 years or older; therefore, Public Health will be receiving less IIV3-HD to allocate.

Primary care providers can begin immunizing clients as soon as their initial vaccine allocation is received.

Contact

WDG Public Health (519) 822-2715

Program Manager
Rosalyn LaRochelle ext. 4213

WDGPH Vaccine and Medication Administrator
Guelph area: ext.4170
Wellington and Dufferin area: ext. 2622