

Sexual Violence Support

QUICK REFERENCE GUIDE



This guide has been developed as a quick reference guide for faculty and staff to access simplified information on how to respond to a disclosure of sexual violence, where to find additional support, and how to access essential training

This guide will provide a brief answer to the following frequently asked questions from faculty and staff:

- Who is the Sexual Violence Support and Education Coordinator?
- What supports are provided?
- How should I respond to a disclosure of sexual violence?
- How do I make a referral?
- What training is available?
- What else can I do?



Who is the Sexual Violence Support and Education Coordinator?

Meaghan Morris, Sexual Violence Support and Education Coordinator provides case management support for student survivors of sexual violence on campus and ongoing education and training for University of Guelph students, staff, and faculty.

The Sexual Violence Support and Education Coordinator is committed to:

- Supporting student survivors of sexual violence;
- Coordinating support, accommodation, resources and reporting options;
- Providing resources and referrals to students and supporters;
- Providing ongoing training for faculty, staff, and students; and
- Implementing prevention and intervention educational programming.

What supports are provided to students?

SEE PAGE 5 FOR
RESOURCE CONTACT
INFORMATION



The Sexual Violence Support and Education Coordinator, provides ongoing case management supports for student survivors of sexual violence including;

ACCOMMODATIONS Accommodations could include helping to address physical safety concerns, academic concerns, and/or physiological concerns, in the spirit of assisting the survivor to find some level of comfort during a difficult healing process.

COORDINATED CARE Care coordination is the deliberate organization of services to facilitate the appropriate delivery of support to meet the needs of individuals. This office will work with the survivor to understand unique obstacles and to develop a management plan that is realistic for the student. Coordinated care allows the survivor to concentrate on themselves with limited attention placed on navigating policies, procedures, and services.

REPORTING OPTIONS Survivors may wish to move forward with a formal process that could result in consequences for the person who caused them harm (criminal or non-criminal). This office will discuss the different reporting processes and the options available and support survivors in walking through these processes.

SAFETY PLANNING Safety planning is a thoughtful, deliberate, and ongoing process in which a staff member and a survivor create a plan to enhance the student's safety to the extent possible. Safety planning includes, but is not limited to: physical safety, environmental safety, psychological safety, and technological safety. The plan also helps students safeguard their wellness and academics. Students are welcome to bring a support person with them to the planning meeting.

CASE CONSULTATION Case consultation support for faculty and staff responding to disclosures and reports of sexual violence is available for all faculty and staff working with survivors who may not feel comfortable accessing the above resources directly.



CONFIDENTIAL AND DIRECT SELF-REFERRAL

J.T. Powell Building | Monday - Friday 8:30 am - 4:30 pm

519-824-4120 ext. 53020 | svinfo@uoguelph.ca | wellness.uoguelph.ca

Faculty and Staff Support

While the Sexual Violence Support and Education Coordinator only works with student survivors, support for Faculty and Staff is also available through:

- [Diversity and Human Rights](#)
- [Employee and Family Assistance Program](#)
- [Employee Groups](#)
- [Faculty and Academic Staff Relations](#)
- [Human Resources](#)

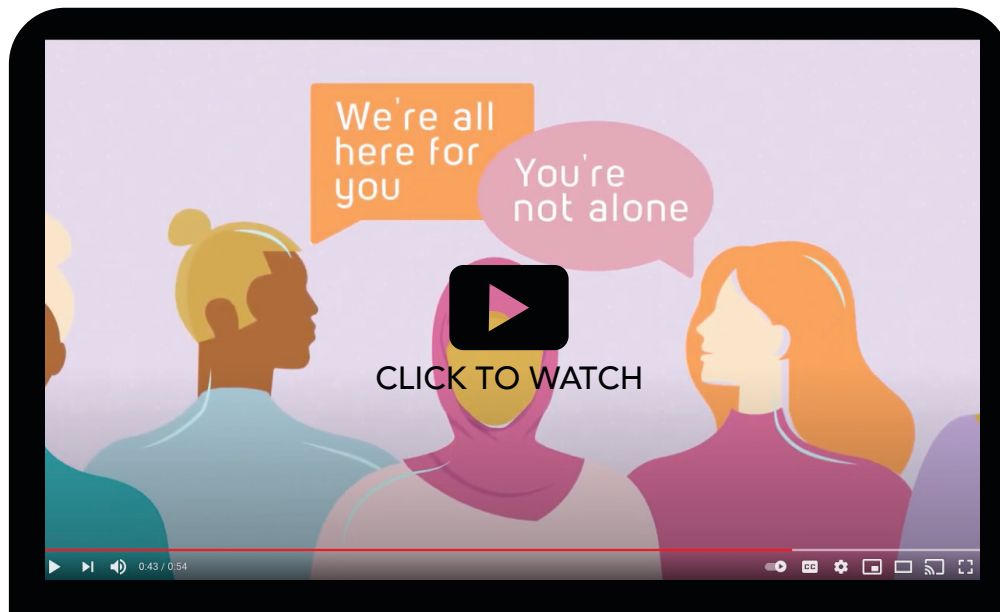
How should I respond to a disclosure?

Faculty and staff are encouraged to respond to disclosures of sexual violence with empathy, care, and kindness. It is important to provide survivors with appropriate academic accommodations while referring to additional resources and supports.

Below are a few key elements:

1. Thank them for telling you and listen with non-judgement.
2. Let them know there are [supports, resources](#), and reporting options available on campus.
3. Never push them to report and don't ask detailed questions about their experience.
4. Follow up with a warm referral (if they consent).
5. Provide academic accommodations without requiring medical notes or documentation.

Watch our “How to Support a Friend” video for more



How do I make a referral?

If a survivor is open and interested, please provide a warm referral to the Sexual Violence Support and Education Coordinator via email, so an intake appointment can be scheduled. To connect with Meaghan, anyone can email or leave a message to schedule a consultation or support meeting at svinfo@uoguelph.ca or call x53020.

Referral to the Sexual Violence Support and Education Coordinator – □ ×

To : svinfo@uoguelph.ca

Cc : student@uoguelph.ca

Subject : Referral to the Sexual Violence Support and Education Coordinator 📎

Good afternoon Meaghan,

I received an email from a student in one of my classes this morning requesting accommodation based on a recent experience of sexual violence. We discussed accommodation and support options, and STUDENT'S NAME (cc'd here) is interested in connecting with you to discuss options.

They look forward to hearing from you to schedule an intake appointment.

Thank you,




📍 ☆ 📎 ✎ 🗑 | ▾

What training do I need to access?

All faculty and staff should take the [!\[\]\(e78f798d4ea5c530c9db49e7d26e6b95_img.jpg\) **Sexual Violence Support Module for Faculty and Staff**](#). This 20-minute online module provides an introductory understanding of what Sexual Violence is, how to respond to disclosure, and resources and reporting options available on campus.

Faculty and staff are also encouraged to check our [!\[\]\(23d9fc146e83b5c3013cfa32c784f8d5_img.jpg\) **Sexual Violence Training Website**](#) and sign up for ongoing training and development opportunities (provided in consultation with the Sexual Violence Training Committee) to develop their skills in responding to disclosures and knowledge of Sexual Violence Policy and supports.

Winter 2021 Training Highlights

- [**“Sexual Violence Support Module for Faculty and Staff”- University Online Module**](#) 
- [**Responding to Disclosures on Campus- Online Module**](#) 
- [**Sexual Violence Support and Response Training for Faculty and Staff- February 2021**](#) 



CONFIDENTIAL AND DIRECT SELF-REFERRAL


J.T. Powell Building | Monday - Friday 8:30 am - 4:30 pm
519-824-4120 ext. 53020 | svinfo@uoguelph.ca | wellness.uoguelph.ca



What else can I do?


PROMOTE SEXUAL VIOLENCE SUPPORT

Creating a supportive and caring community for Sexual Violence survivors involves everyone.

You can show your support and help promote survivor supports and prevention initiatives by sharing the office resource card in your lecture, inviting the Sexual Violence Support and Education Coordinator in to provide a guest lecture or resource overview, embedding the  **Sexual Violence Support Module for Students** within course outlines, and by promoting our student focused education efforts.

SHARE EDUCATION AND PREVENTION WITH STUDENTS

The Sexual Violence Support and Education Coordinator works with the Sexual Violence Education Committee and SAFE (Sexual Assault Free Environment) Team to provide ongoing education and awareness related to consent and sexual violence.

Faculty and Staff are encouraged to share our programming with students they work with and encourage their students to complete the online  **Sexual Violence Support Module for Students** available through **Courselink**.

*The Sexual Violence Training Committee welcomes feedback on this guide through svinfo@uoguelph.ca

Sexual Violence Resources

Counselling Services

Monday - Friday 8:30 am - 4:30 pm

519-824-4120 ext. 52131

Student Support Network

Visit wellness.uoguelph.ca/ssn for hours

J.T. Powell Building and
McLaughlin Library, Room 111

Guelph General Hospital Sexual Assault Care and Treatment Centre- 24 hrs/ day

519-837-6440 ext. 2210

Guelph Wellington Women In Crisis

Crisis Line - 24 hrs/day

1-800-265-7233
519-836-5710

Good2Talk

24 hrs/day

1-866-925-5454

Here24/7

24 hrs/day

1-844-437-3247

Crisis Text Line - Powered By Kids Help

Phone - 24 hrs/day

Text UofG to 686868



CONFIDENTIAL AND DIRECT SELF-REFERRAL

J.T. Powell Building | Monday - Friday 8:30 am - 4:30 pm
519-824-4120 ext. 53020 | svinfo@uoguelph.ca | wellness.uoguelph.ca